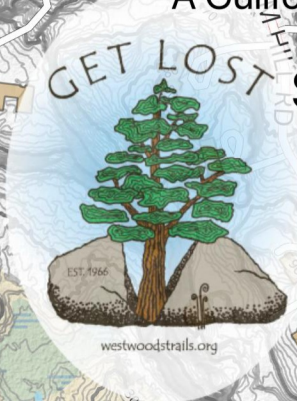


# Westwoods Loop 2 – Split Rock

A Guilford Land Conservation Trust Managed Property

Sam Hill Trailhead to Lost Lake and Split Rock -- Highlight in RED

An easy hike to the Lost Lake Vista with a view of the 'Split Rock of Westwoods' on your return. (about 2.2 miles)



**Loop 2 Points of Interest**

- △ 1 - Lost Lake Overlook
- 2 - Forest Regeneration
- 3 - Tree at Split Rock

